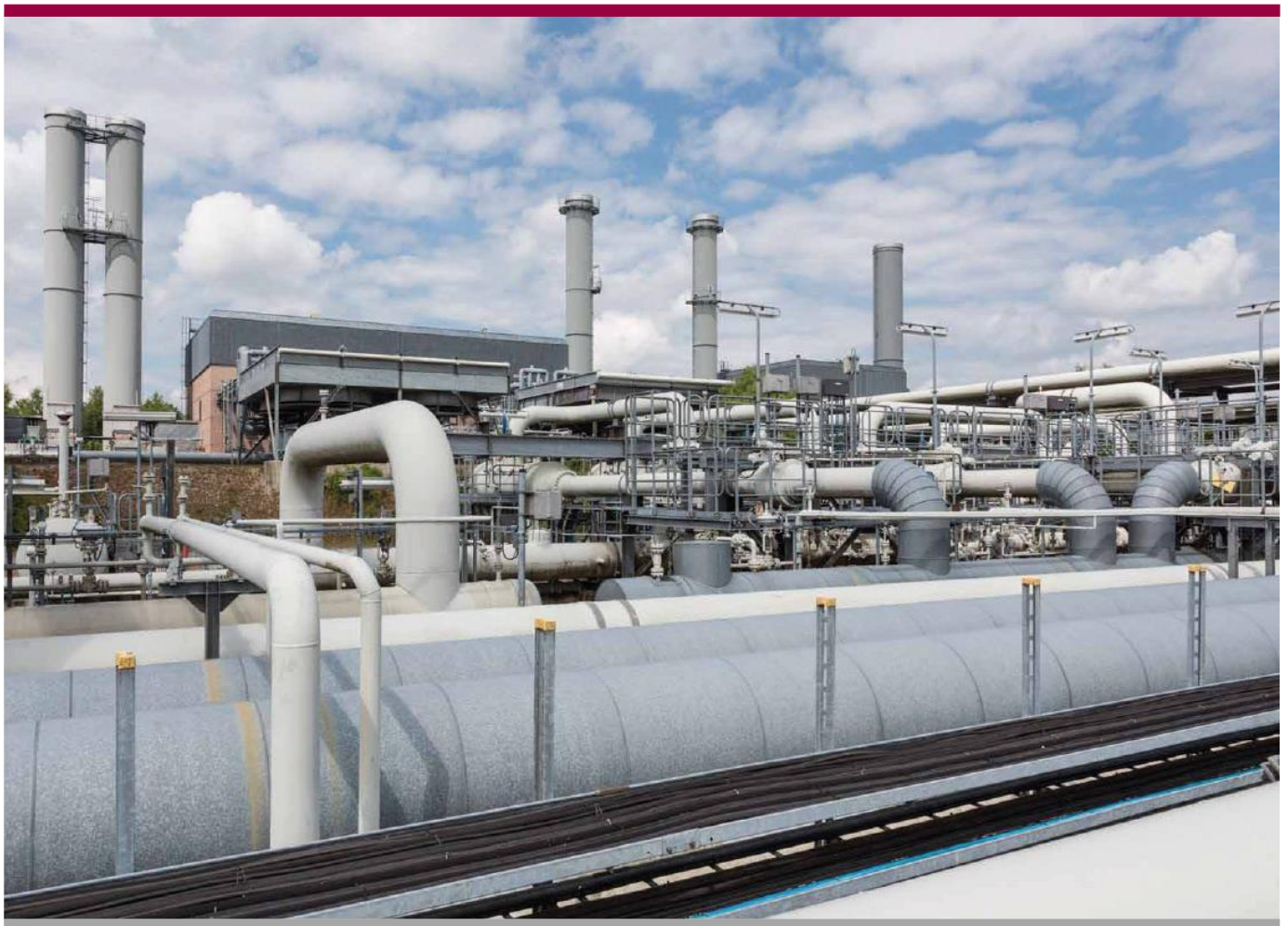


GASCADE Gastransport GmbH

HSE INSTRUCTION SHEET FOR CONTRACTORS

Version 4 | Last revised: 22 April, 2024



GENERAL

1. The instructions given by GASCADE supervisory personnel must be followed. If these instructions are breached, work may be stopped and the contractor employee may be ejected from the company site.
2. External persons are only allowed in the designated areas or the designated place of work. Places of work must be kept tidy and properly secured.
3. Smoking is not permitted anywhere on the company site. Bringing alcohol or drugs onto the company site or working under the influence of alcohol or drugs is prohibited.
4. Road traffic regulations apply on the company site. Workers should seek permission before driving onto the site in vehicles. Workers may not leave paved roads and areas without explicit permission.
5. All incidents and dangerous situations and actions must be reported to the supervisory personnel immediately.
6. A written work permit in accordance with GASCADE's permit system must be obtained before any work begins.



FIRE PROTECTION

7. Any use of fire or naked flames requires written permission.
8. Emergency exits and fire-fighting equipment must not be blocked.
9. In the event of fires and other hazards, the relevant area should be evacuated immediately. Personnel should then meet at the assembly point and inform the supervisory personnel.



WORK EQUIPMENT

10. Any work equipment used should be in good condition and should be checked in accordance with regulations. If requested to do so, proof of these checks must be provided.
11. In exceptional cases, authorized personnel or persons who have been given the necessary instructions may use GASCADE's facilities and equipment, etc. However, this is only possible following a written handover.



PERSONAL PROTECTIVE EQUIPMENT

12. A safety helmet which complies with DIN EN 397 and safety lace-up shoes or boots which comply with DIN EN ISO 20345 S3 must be worn on the entire company site, at compressor and shut off stations, and on construction sites. Open shoes must not be worn.
13. Trousers and jackets with heat and flame protection in accordance with DIN EN ISO 11612 or with flame-retardant properties in accordance with DIN EN ISO 14116 must be worn at all times when carrying out all work (manual work, monitoring manual work) at the company. When carrying out the aforementioned work in explosive areas, clothing must also comply with DIN EN 1149-5 "Electrostatic Discharge". Those responsible for GASCADE may grant justified exceptions. Short trousers must not be worn. This excludes areas and work in accordance with site-specific requirements.
14. Each worker must carry safety goggles in accordance with DIN EN 166. These should be worn when carrying out activities which pose a hazard to the eyes and when entering dangerous areas. In addition, full coverage goggles in accordance with DIN EN 166 with BT authorization should be worn when carrying out work which poses a particular hazard to the eyes (e.g. cutting using an angle grinder).
15. PPE to prevent falls when using working platforms, man baskets, etc. is required if a) a telescopic working platform is used, b) a man basket is attached to lifting apparatus (crane), c) this is required according to the manufacturer's operating instructions or d) use of such equipment is required in accordance with a risk assessment. The use of PPE to prevent falls when using a man basket on a forklift truck is not necessary if items c) and d) do not apply.
16. No personal protective equipment is needed for work which only involves office activities. Furthermore, additional or alternative specific protective equipment appropriate to the activity or potential risk should be used.



These rules relate to the respective site plan.

Contractor companies are responsible for briefing deployed personnel regarding the content of the safety regulations and compliance with them.

Breaching the safety regulations may result in personnel being immediately ejected from the company site and being permanently banned from entering the site.

GASCADE Gastransport GmbH

Kölnische Straße 108–112

34119 Kassel

Tel. +49 561 934-0

Fax +49 561 934-1158

hse@gascade.de

www.gascade.de

